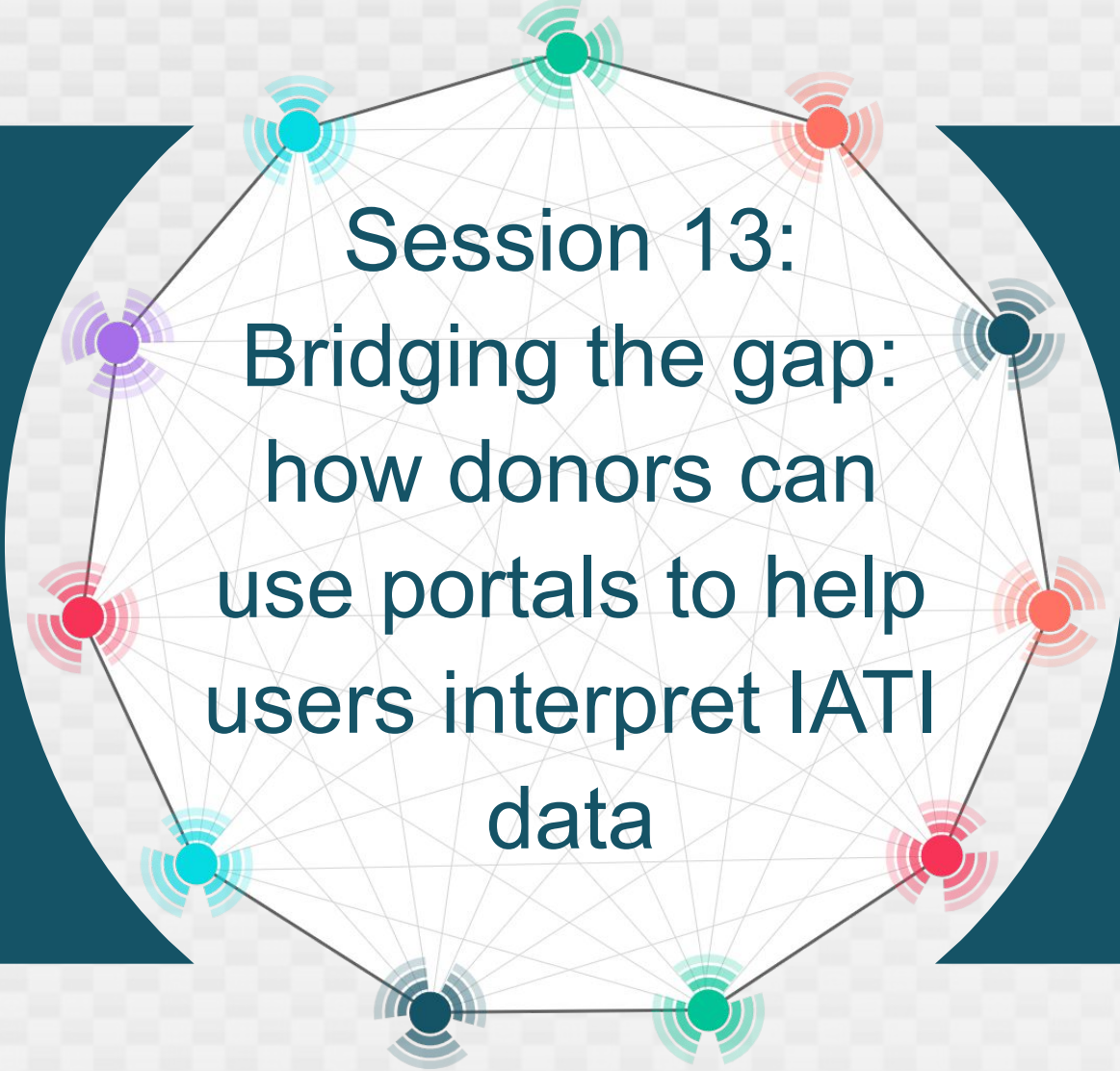




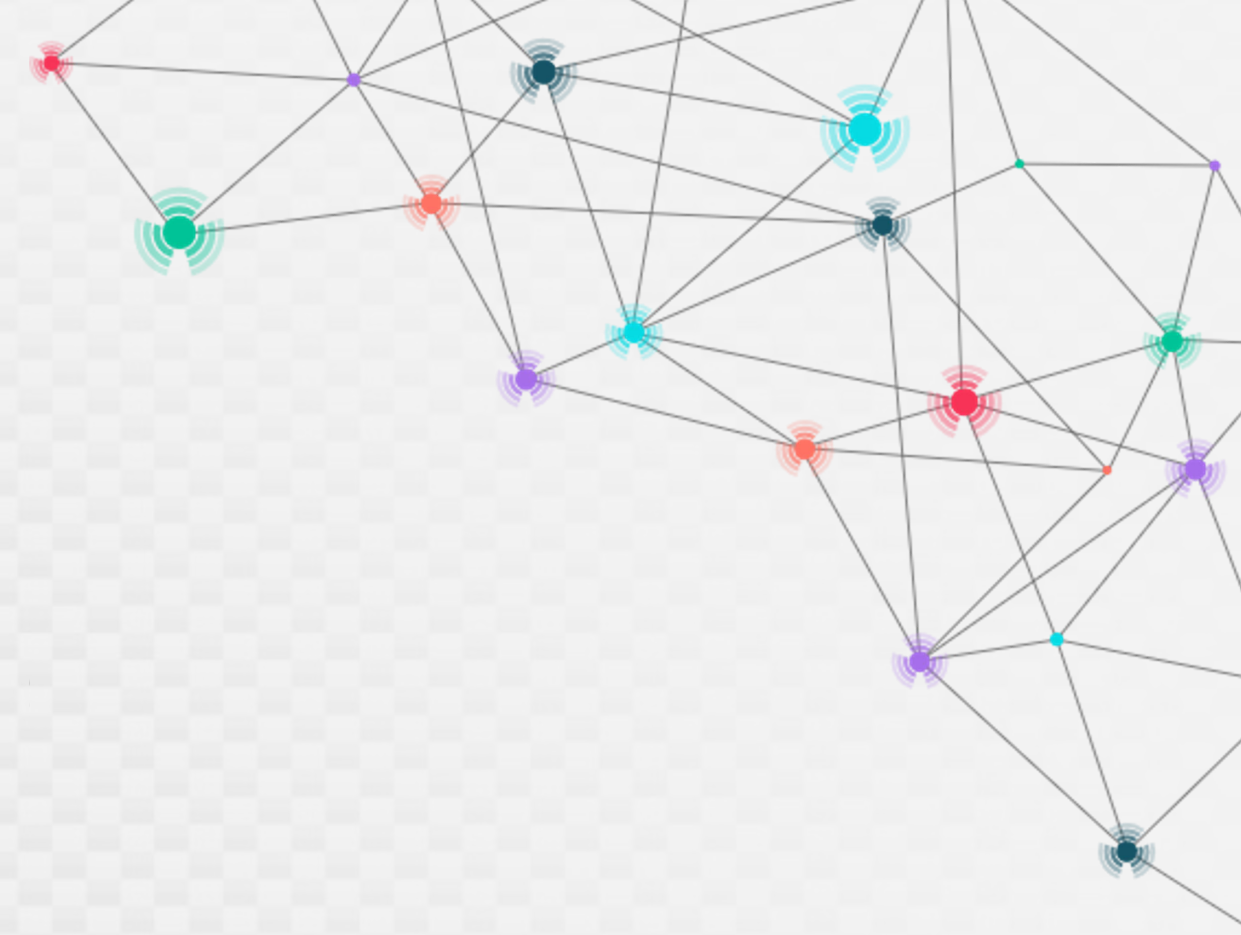
**Session 13**



Session 13:  
Bridging the gap:  
how donors can  
use portals to help  
users interpret IATI  
data



Bogotá, Colombia  
25 & 26 April 2024



# Bridging the gap: How donors can use portals to help users interpret IATI data

---

Sarah Neumann

Federal Ministry of Economic Cooperation and Development  
Germany

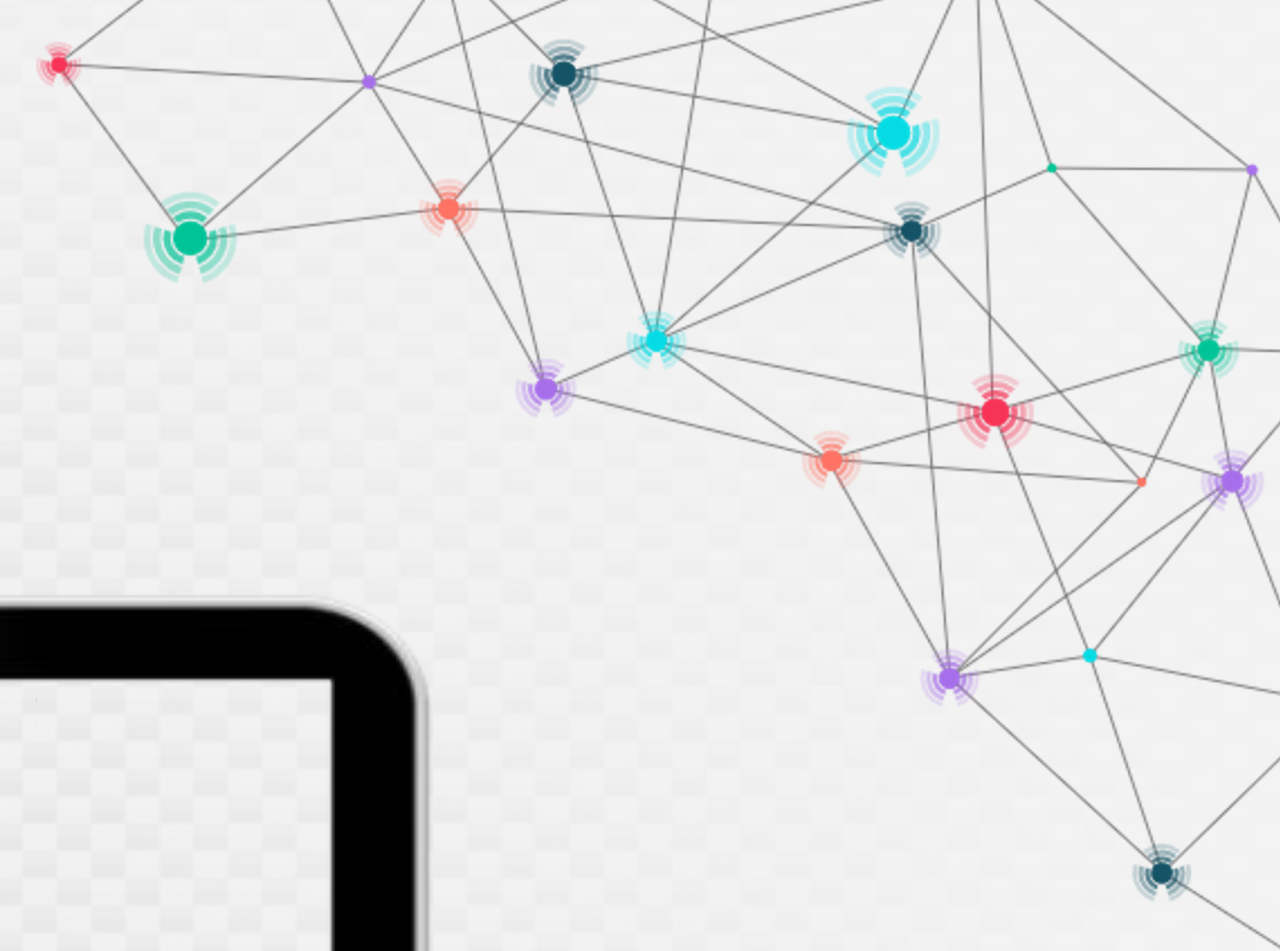
26.04.2024



Federal Ministry  
for Economic Cooperation  
and Development



# Our work routine before ...



# Live demo: Our transparency portal

The screenshot displays the homepage of the transparency portal for the German Federal Ministry for Economic Cooperation and Development (BMZ). The page features a navigation menu with links for 'Startseite', 'Detailsuche', 'Publikationen', and 'Glossar'. The main content area is divided into several sections:

- Transparenz in der Entwicklungszusammenarbeit:** A introductory text block explaining the portal's purpose in supporting the 2030 Agenda.
- Unser Beitrag zu den Zielen für nachhaltige Entwicklung (SDGs):** A horizontal bar chart showing the contribution of projects to three specific SDGs.
- Unsere aktuellen Förderschwerpunkte:** A horizontal bar chart showing the top 10 funding sectors.

A 'LINK' button with a mouse cursor is visible in the bottom right corner of the screen.

SDG Goal	Contribution (Mrd. €)
Ziel 1: Keine Armut	32,99
Ziel 2: Kein Hunger	10,19
Ziel 3: Gesundheit und Wohlergehen	12,53

Sektor	Contribution (Mrd. €)
Energieerzeugung, -verteilung und -effizienz	12,43
Wasser und Abwasser/Abfallentsorgung	6,85
Landwirtschaft, Forstwirtschaft, Fischerei	6,22
Staat und Zivilgesellschaft	6,15
Andere multisektorale Maßnahmen	6,04
Bildung	4,74







**Allgemeines** | Ort | Sektoren | SDG | Finanztransaktionen | Beteiligte | Freitextsuche

Status Zurücksetzen Titel Zurücksetzen IATI Maßnahmen-ID Zurücksetzen

Wählen Sie zwischen laufenden und beend

Laufzeit Zurücksetzen Evaluierung

1977 2039  Nur evaluierte Maßnahmen anzeigen

Ihre ausgewählten Suchkriterien Zurücksetzen ↻

Ruanda ×

**216 Ergebnisse** Detailsuche schließen ^



## Maßnahmenübersicht

[Maßnahmenliste](#)   [Maßnahmendashboard](#)   Ergebnisse sortieren ▼   [Exportieren](#) ↓

### Friedliche und inklusive Wanderweideschaft - Transhumanz

**Partnerregion:** Afrika  
**Sektoren übergeordnet:** Krisenprävention und Konfliktlösung, Frieden und Sicherheit, Landwirtschaft, Staat und Zivilgesellschaft allgemein, Umweltschutz allgemein  
**Status:** Laufend  
**Laufzeit:** 1.3.2023 - 28.2.2026 (geplant)  
**Finanzierungsvolumen:** 5.900.000,00 €  
**IATI Maßnahmen-ID:** DE-1-202220028  
**Durchführungsorganisation:** Deutsche Gesellschaft für Internationale Zusammenarbeit (GIZ) GmbH

[→ Zum Steckbrief](#)

---

### Fonds für VP und projektbegleitende Maßnahmen zur Prüfung, Planung und Begleitung von PartnerAfrika-Projekten im Rahmen der SI Ausbild.&Beschäftigung

**Partnerregion:** Afrika  
**Sektoren übergeordnet:** Privatwirtschaftliche und andere Dienste  
**Status:** Laufend  
**Laufzeit:** 1.1.2023 - 31.12.2024 (geplant)  
**Finanzierungsvolumen:** 242.000,00 €  
**IATI Maßnahmen-ID:** DE-1-202302107-0  
**Durchführungsorganisation:** SEQUA - Stiftung für wirtschaftliche Entwicklung und berufliche Qualifizierung

[→ Zum Steckbrief](#)





< Zurück zur Trefferliste

## Verbesserung der Lebensumstände und psychosoziale Unterstützung im Kontext von Flucht und Vertreibung

IATI Maßnahmen-ID: DE-1-202140796

Steckbrief drucken

**Südsudan**

Anzahl alle Projekte: 208

Auszahlungen / Ausgaben alle Projekte: 850,25 Mio. €

**Titel**  
Verbesserung der Lebensumstände und psychosoziale Unterstützung im Kontext von Flucht und Vertreibung

**IATI Maßnahmen-ID**  
DE-1-202140796

**Maßnahmenbeschreibung**  
Die ernährungsphysiologischen, ökonomischen und psychosozialen Lebensumstände von Rückkehrenden, Binnenvertriebenen und aufnehmenden Gemeindemitgliedern sind verbessert.

**Geographische Daten**  
**Partnerland:** Südsudan  
**Geographischer Umfang:** National

**Sektoren**  
**Sektoren übergeordnet:** Landwirtschaft  
**Sektoren untergeordnet:** Landwirtschaftsentwicklung

**Laufzeit**  
**Startdatum:** 1.10.2021  
**Enddatum:** 31.12.2024 (geplant)

**Status**  
**Status:** Laufend  
**Evaluierung:** Nein

**Finanztransaktionen**  
**Finanzierungsvolumen:** 5.850.000,00 €  
**Ausgaben:** 2.849.396,32 €  
**Ausgezahlter Kofinanzierungsbetrag:** 0,00 €  
**Kofinanzierter Betrag des Finanzierungsvolumen:** 0,00 €  
**Ausgabenfortschritt:** 49 %  
**Finanzierungsart:** Zuschuss

**Beteiligte**  
**Finanzier:** Bundesministerium für wirtschaftliche Zusammenarbeit und Entwicklung (BMZ)  
**Ko-Finanzier:** -  
**Durchführungsorganisation:** Deutsche Gesellschaft für Internationale Zusammenarbeit (GIZ) GmbH  
**Umsetzungspartner:** Kein politischer Träger

**Weitere Informationen**

**Sustainable Development Goals (SDGs)**

Ziel 2: Kein Hunger

Übersektorale Kennungen	Hauptziel	Signifikantes Nebenziel	Nicht relevant
Gleichberechtigung der Geschlechter		✓	
Umwelt- und Ressourcenschutz			✓
Demokratische und inklusive Regierungsführung*			✓
Handelsentwicklung (vergeben bis 2021)			✓
Biodiversitätskonvention (Rio-Marker)			✓
Minderung von Treibhausgasen (Rio-Marker)			✓
Anpassung an den Klimawandel (Rio-Marker)			✓
Desertifikationsbekämpfung (Rio-Marker)			✓
Reproduktive, Mütter-, Neugeborenen- und Kindergesundheit			✓
Katastrophenrisikomanagement (vergeben ab 2022)			✓

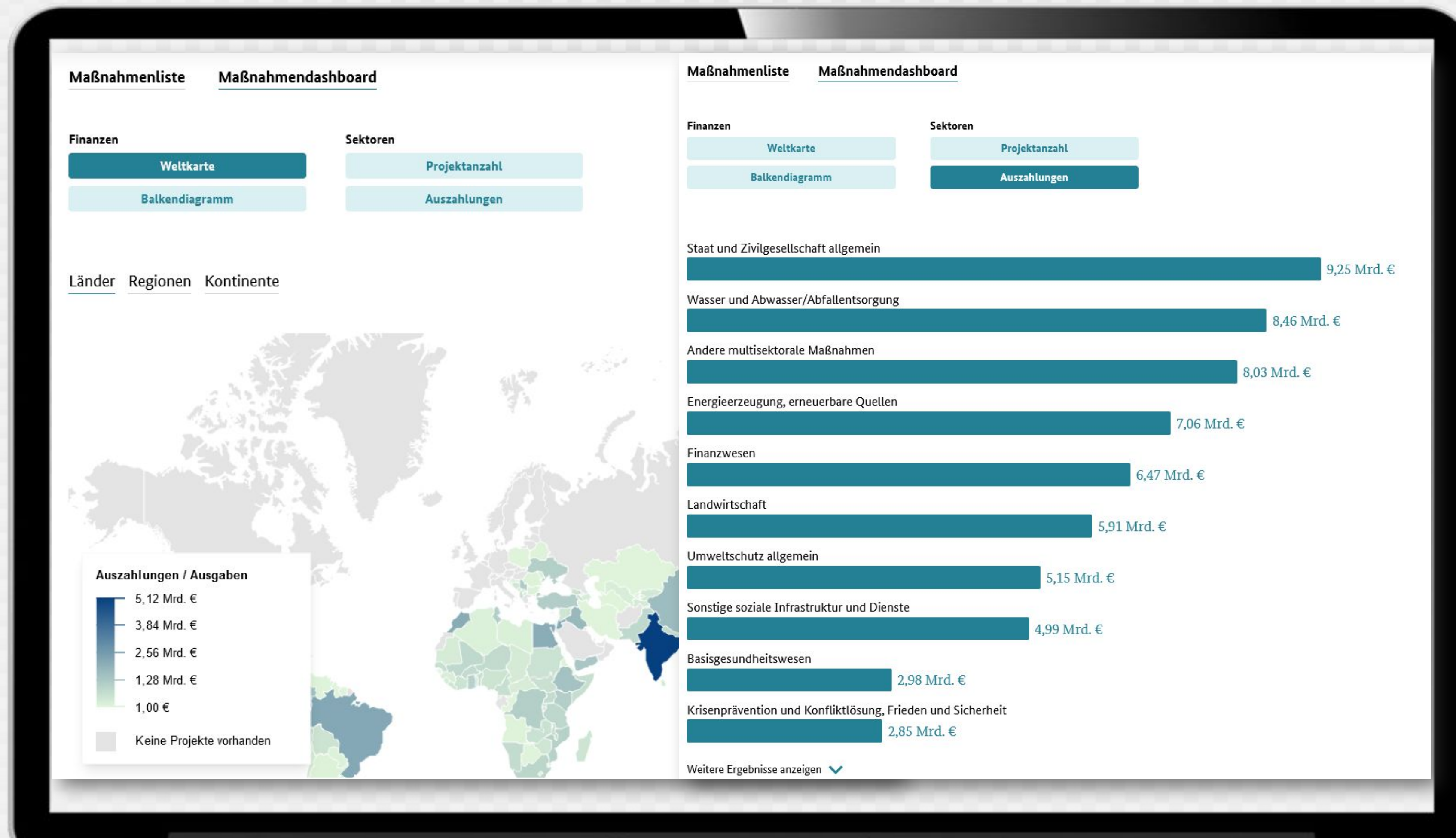
\*Die Kennung "Partizipative Entwicklung/Gute Regierungsführung" (PD/GG) wurde 2021 durch die OECD reformiert und in "Demokratische und inklusive Regierungsführung" (DIIG) umbenannt.

**Weiterführende Informationen**

Website:  
[Verbesserung der Lebensumstände und psychosoziale Unterstützung im Kontext von Flucht und Vertreibung](#)

FZ-/TZ-Leitlinien:  
[Leitlinien für die bilaterale Finanzielle und Technische Zusammenarbeit mit Kooperationspartnern der deutschen Entwicklungspolitik](#)

Mehr



... and after the launch of our data portal



# What did we learn? (i)

## Awareness & Accessibility

IATI standard makes development data available; a data portal makes it accessible. Our portal's launch significantly boosted **internal and external awareness** of IATI and **data transparency**.

## Data quality

Making our data easily accessible for the public, helped us to **leapfrog on data quality** and to take different perspectives on the **meaningfulness of our data**. Our data improved in depth, width and breadth.

## Transparency vs security

The launch of our data portal, simplifying access to development data, sparked a **vigorous debate** on **transparency and security**. The discussion mainly evolved around the **risks of accessible data** for project partners but also the **political risks** for us as provider of development cooperation.

# What did we learn? (ii)

## Meaningfulness

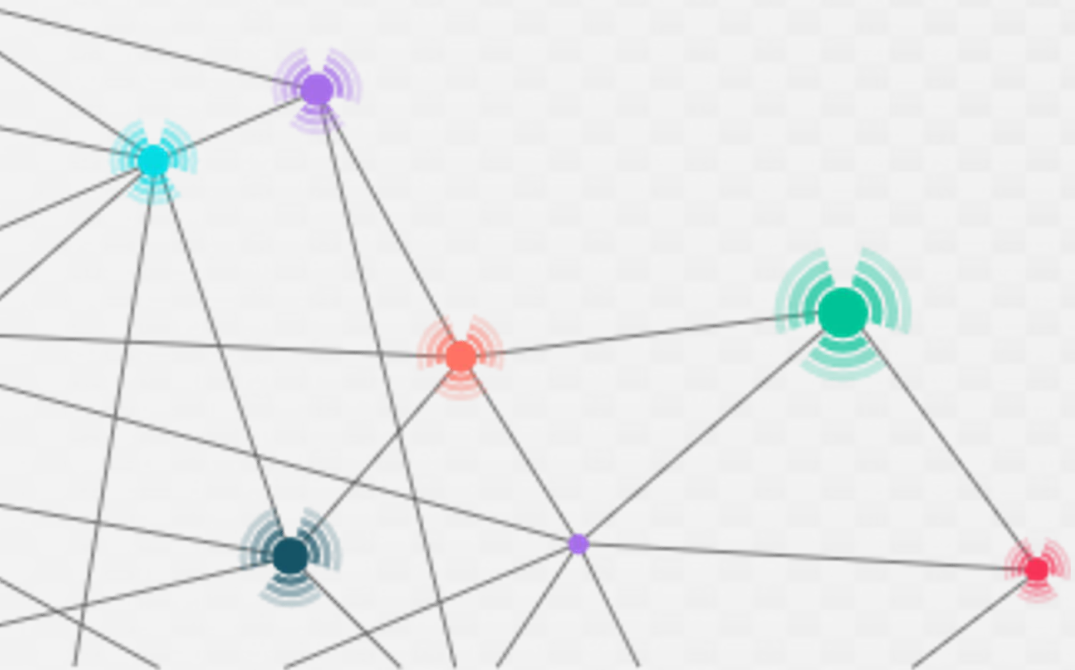
Our perspective on IATI data has expanded **beyond standards and transparency** to include our data portal's viewpoint. The key focus is on the narratives our data can convey and our ability to tell the desired stories.

## Variety of user groups

Our data portal aims to cater to **diverse user groups** with varying needs, intentions, and expertise in development cooperation. To ensure clarity, we **contextualize the data** and **elucidate the intricacies** of this specialized field.

## Politicalisation of data

With easy access, our data has become **highly political data** - especially in a social environment that is becoming more politically fragmented. Lacking context, it has **already exploited for social manipulation**.

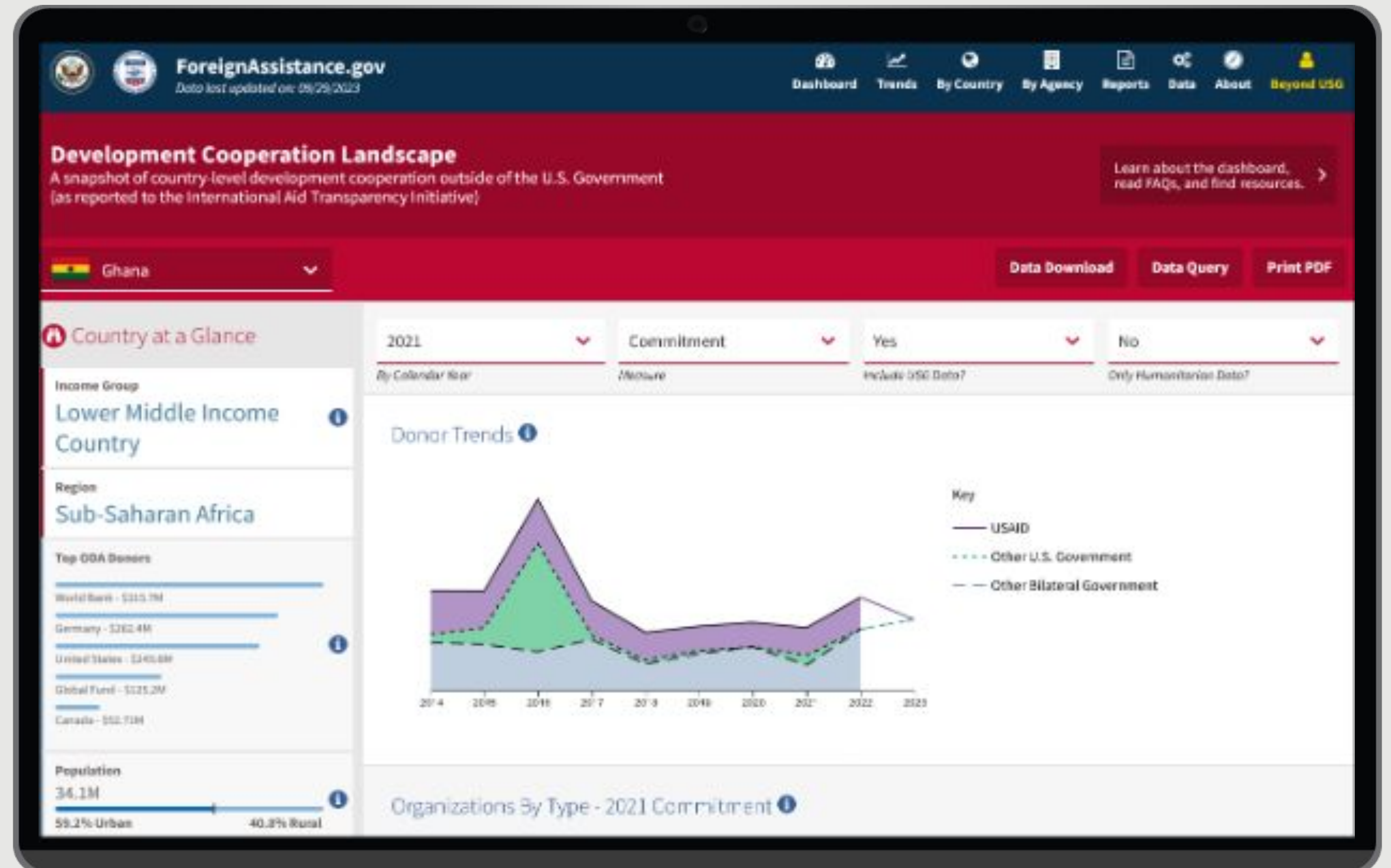




# The Development Cooperation Landscape Tool

# Development Cooperation Landscape (DCL)

- Visualization tool for development landscape relationships
- Leverages IATI data to understand USAID partners' work
- Organizations publish data between daily and annually





# What is the Development Landscape Tool?

## Mission and History

USAID launched the DCL in 2019, with the goal of leveraging IATI data to better understand the work of USAID development partners.

- **What:** Visualization tool to strengthen and expand relationships and understanding of the development landscape using publicly available data.
- **Where:** All valid IATI data from 2014 onward are pulled into the DCL.
- **Who:** Over 1,600 organizations publish in the IATI standard. Includes non-standard donors.
- **When:** Organizations publish new activities and transactions between a daily and annual frequency. The DCL is updated monthly.
- **Why:** Strengthen relationships with providers, promote coordination among providers, and enhance the development landscape understanding.





**USAID**  
FROM THE AMERICAN PEOPLE



# Development Cooperation Landscape Demonstration

To access the Development Cooperation landscape, navigate to

[www.foreignassistance.gov/donor](http://www.foreignassistance.gov/donor), or click the Beyond USG icon from the main page.

Select a country from the dropdown or type in a name on the landing page and click on it

The screenshot displays the 'ForeignAssistance.gov' website. The header includes the site logo, the text 'ForeignAssistance.gov', and 'Data last updated on: 03/28/2024'. A navigation bar at the top right contains icons and labels for 'Dashboard', 'Trends', 'By Country', 'By Agency', 'Reports', 'Data', 'About', and 'Beyond USG'. The main content area features a world map background. A white modal window titled 'Development Cooperation Landscape' is open, containing a dropdown menu with the text 'Select country to view...'. The dropdown list shows the following options: Azerbaijan, Bahamas, Bahrain, and Bangladesh. The Bangladesh option is currently selected and highlighted in light blue.

# Development Cooperation Landscape Demonstration

Each country has a landing page with interactive filters and visuals summarizing IATI data. Changing the filters at the top will apply them the rest of the views on the page.

## Development Cooperation Landscape

A snapshot of country-level development cooperation outside of the U.S. Government (as reported to the International Aid Transparency Initiative)

Learn about the dashboard, read FAQs, and find resources. >

Bangladesh

Data Download Data Query Print PDF

### Country at a Glance

**Income Group**  
Lower Middle Income Country

**Region**  
South and Central Asia

**Top ODA Donors**

Japan	\$2.283B
World Bank Group	\$1.124B
United States	\$375.6M
France	\$214.5M
Germany	\$192.4M

**Population**  
175M

41.2% Urban 58.8% Rural

**GNI**  
\$480b

**GNI per capita**  
\$2.8k

**ODA**  
3.90%

**ODA per capita**  
\$29.77

**Government Tax Revenue (percent of GDP)**  
7.6%

Past Five Years Commitment Yes No

By Calendar Year Measure Include USG Data? Only Humanitarian Data?

### Donor Trends

Key

- USAID
- Other U.S. Government
- Other Bilateral Government

### Organizations By Type - Past Five Years Commitment

**Bilateral Government**

\$1.717B - U.S. Government
\$860.2M - AFD
\$767.3M - European Commission - Directorate-General for International Partnerships

**Academic, Training, and Research Organization**

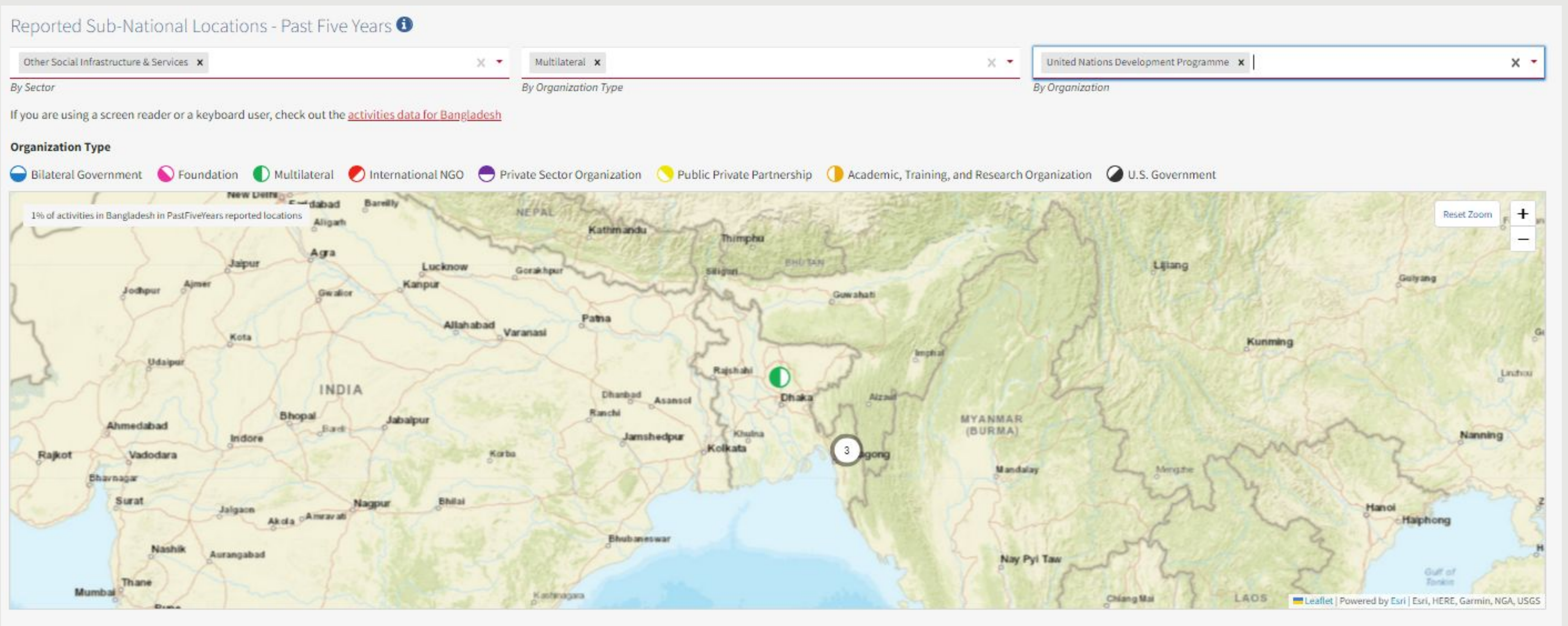
\$32.38M - CGIAR
------------------

**Multilateral**

\$24.29B - Asian Development Bank
\$3.164B - World Bank

# Development Cooperation Landscape Demonstration

If you scroll down, there is an interactive map of subnational locations, if reported. You can filter by sector, organization type, and organization. Note that only a relatively small percentage of activities report subnational locations.



# Development Cooperation Landscape Demonstration

Further down, there is an interactive treemap of funding by sector, filterable by organization type. You can further drill down into sectors by clicking on one.



# Development Cooperation Landscape Demonstration

There is an activity data section at the bottom—you will see all activities reported in a country by default, in order of descending cost. You can also use the search feature in the top right to locate a particular activity or keyword, in this case, horticulture.

IATI Activity Data - Past Five Years Commitment 🔍 horticulture ✕

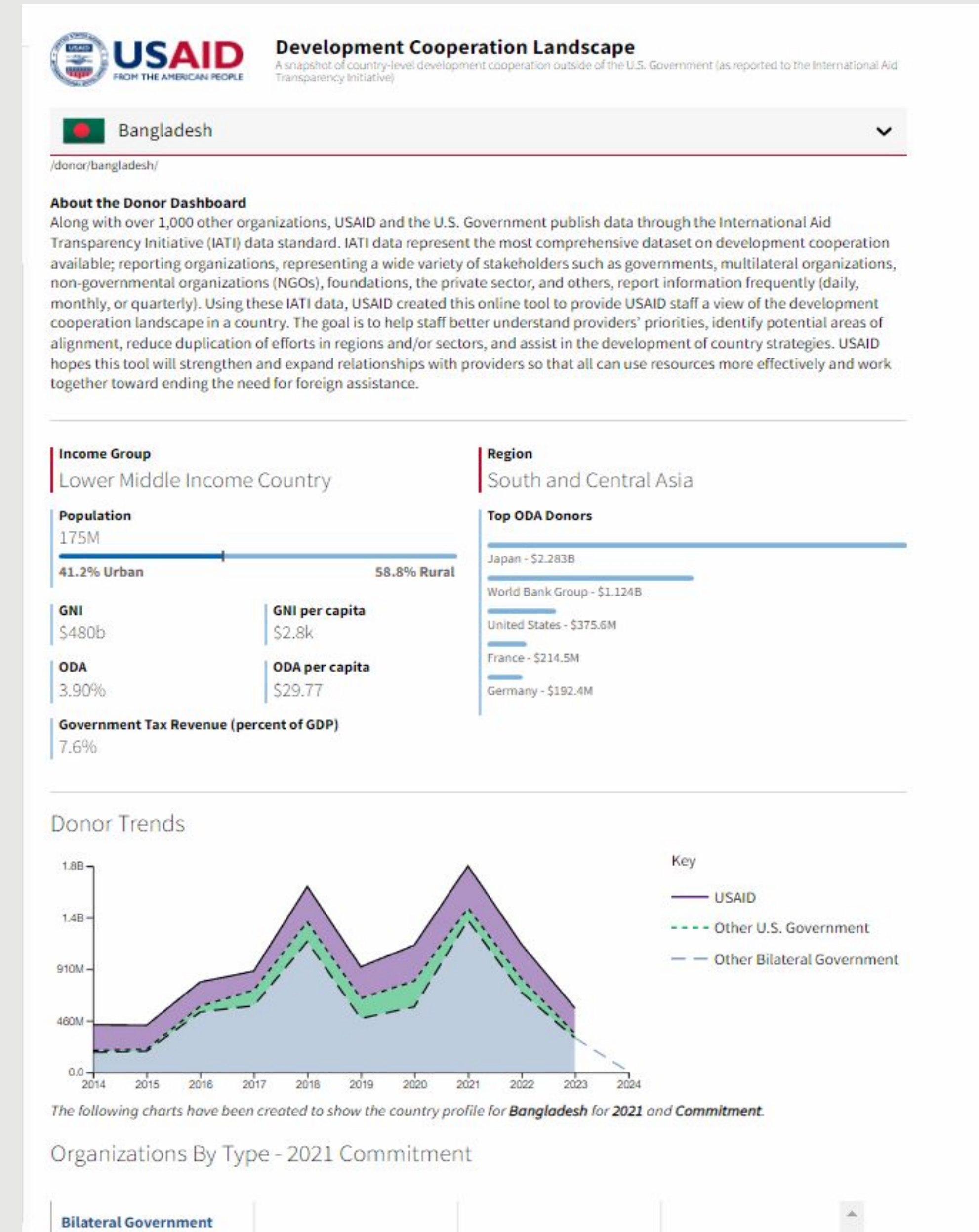
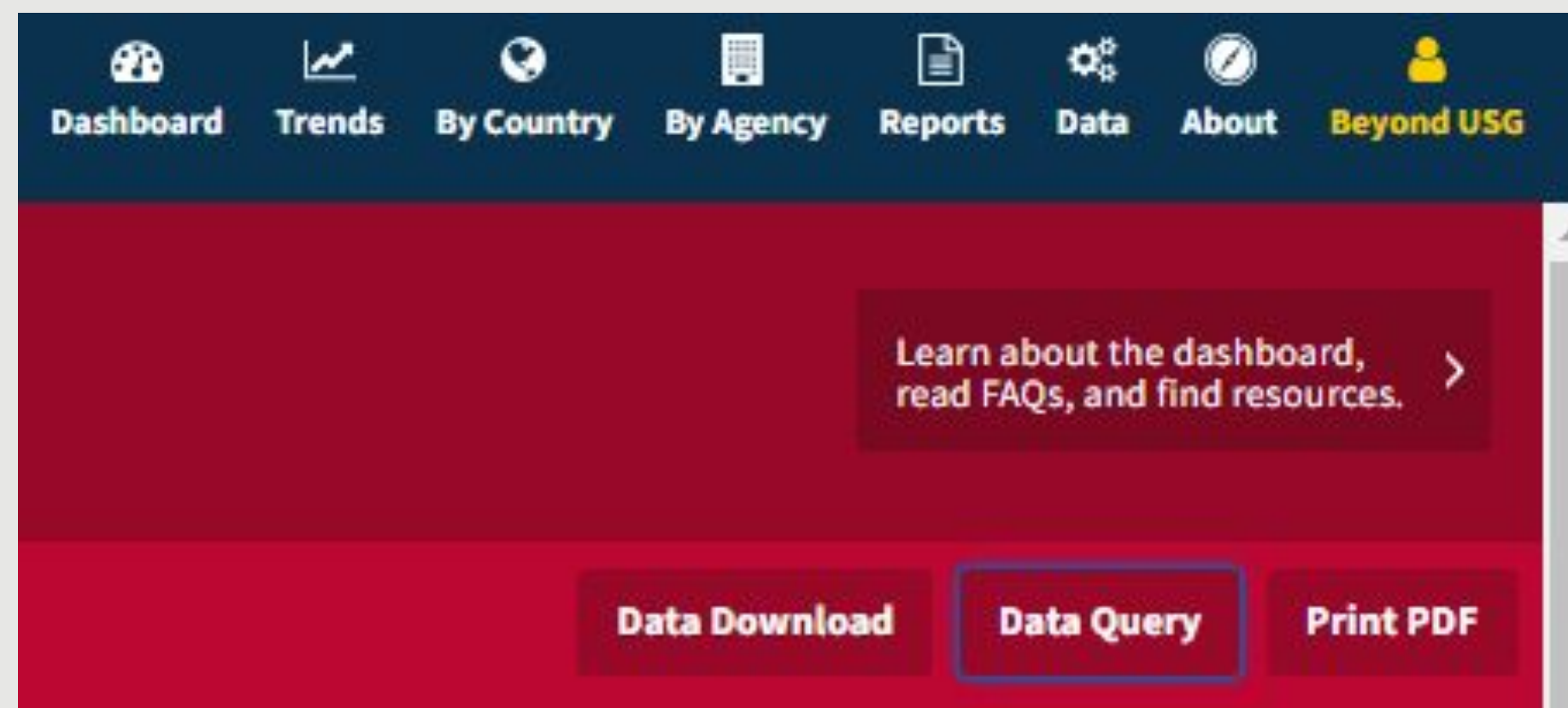
Activity Name	Organization Name	Organization Type	Sector	Purpose	Total PastFiveYears Commitment
<a href="#">Bangladesh Horticulture, Fruits and Non-Food Crops Activity</a>	U.S. Government	Bilateral Government	Agriculture   Business & Other Services	Business policy and administration; Agricultural policy and administrative management	\$12,800,000.00
<a href="#">Nutrition-Horticulture Collaborative Research Program</a>	U.S. Government	Bilateral Government	Agriculture	Agricultural development; Agricultural policy and administrative management	-\$92,526.08
<a href="#">Sector study horticulture Bangladesh</a>	Netherlands Enterprise Agency	Bilateral Government	Agriculture	Agricultural development	\$60,424.33
<a href="#">Study protected horticulture Bangladesh</a>	Netherlands Enterprise Agency	Bilateral Government	Agriculture	Agricultural research	\$38,630.66
<a href="#">Opportunities combi-track sustainable horticulture</a>	Netherlands Enterprise Agency	Bilateral Government	Agriculture	Agricultural development	\$8,766.91

Rows per page: 10 rows |< < 1-5 of 5 > >|

# Development Cooperation Landscape Demonstration

If you scroll back up to the top, you can find the download data button, the data query button, or generate a print-friendly PDF of the page.

This query page is where you can dig into the data and generate custom files.





# Development Cooperation Landscape Demonstration

On the query page, one can select filters from any field in the IATI data.

Note that unlike on the country page, you could also analyze multiple countries here by downloading the corresponding data using filters—this could be used for regional analysis near the Sahel by organization type, for example. You can completely customize your data file!

ADD FILTERS X

**APPLY FILTERS** CLEAR FILTERS

Select one or more... ▼  
Organization Name

Select one or more... ▼  
Organization Type

Select one or more... ▼  
Transaction Year

Select one or more... ▼  
Recipient Country

Select one or more... ▼  
Aid Type

Donor Data Query

Edit Filters Recipient Country: Niger Mali Burkina Faso Organization Type: Multilateral International NGO Bilateral Government Disbursement

Add Columns Download CSV Search

Activity Name	Organization Name	Organization Type	Sector	Recipient Country	Calendar Year	Transaction Amount
<a href="#">Vérification financière des dépenses du Devis Programme du VAFA</a>	European Commission - Directorate-General for International Partnerships	Bilateral Government	Agriculture	Burkina Faso	2022	\$5,011.15
<a href="#">Vérification financière des dépenses du Devis Programme du VAFA</a>	European Commission - Directorate-General for International Partnerships	Bilateral Government	Agriculture	Burkina Faso	2021	\$8,779.47
<a href="#">Vérification financière des dépenses du Devis Programme du VAFA</a>	European Commission - Directorate-General for International Partnerships	Bilateral Government	Agriculture	Burkina Faso	2020	\$6,980.11
<a href="#">Vérification financière des dépenses du Devis Programme du VAFA</a>	European Commission - Directorate-General for International Partnerships	Bilateral Government	Agriculture	Burkina Faso	2019	\$21,894.25
<a href="#">Sustaining Peace in Mali and the Sahel Region through Strengthening Regional Peacekeeping Training Capacities, Phase III-1</a>	Germany - Federal Foreign Office	Bilateral Government	Conflict, Peace & Security	Mali	2018	\$296,223.93
<a href="#">Sustaining Peace in Mali and the Sahel Region through Strengthening Regional Peacekeeping Training Capacities, Phase III-1</a>	Germany - Federal Foreign Office	Bilateral Government	Conflict, Peace & Security	Niger	2018	\$63,476.56
<a href="#">Sustaining Peace in Mali and the Sahel Region through Strengthening Regional Peacekeeping Training Capacities, Phase III-1</a>	Germany - Federal Foreign Office	Bilateral Government	Conflict, Peace & Security	Burkina Faso	2018	\$63,476.56
<a href="#">Fresh Fruit &amp; Vegetables West Africa</a>	Netherlands Enterprise Agency	Bilateral Government	Agriculture	Mali	2017	\$103,313.26

# Potential Use Cases Discussion

- **What might you use this site for?**
- **Are there specific questions you regularly ask about IATI data that this site might be helpful in answering?**
- **Are there specific feature changes or additions that would be useful?**
- **How would you verify the data is correct against IATI?**

Questions?