



International
Aid Transparency
Initiative

Upgrading the IATI Standard

Session 3

IATI Community Exchange, 27 November 2025



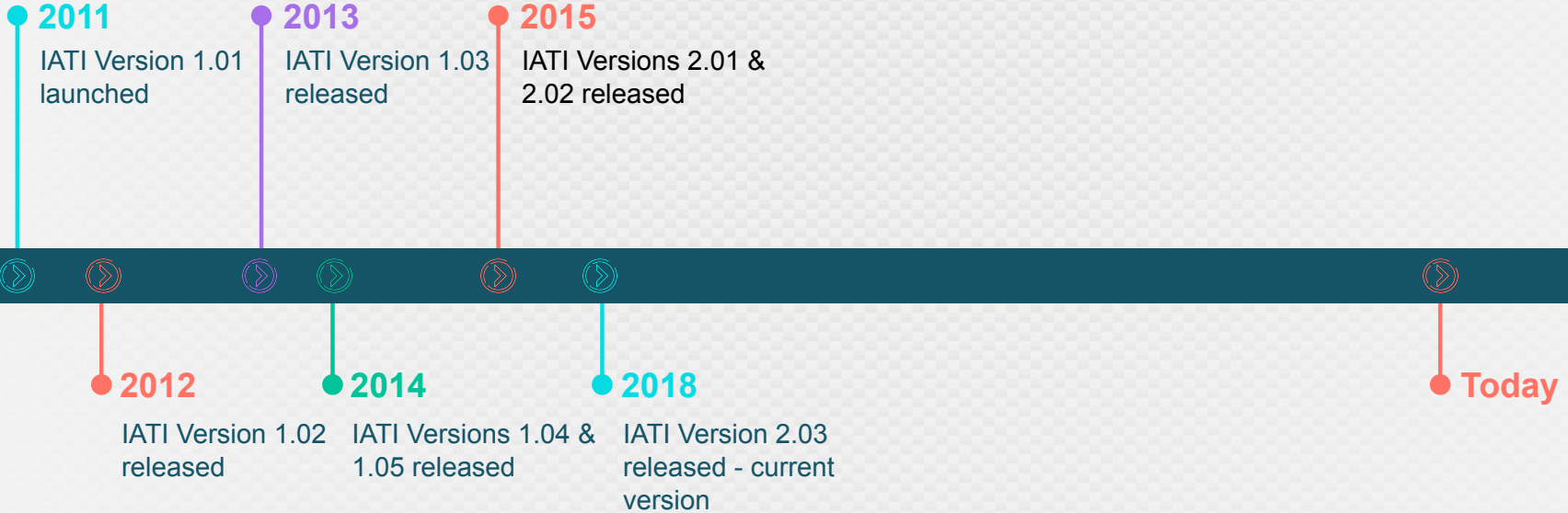
Changing the IATI Standard

IATI Community Exchange, Nairobi
27th November 2025

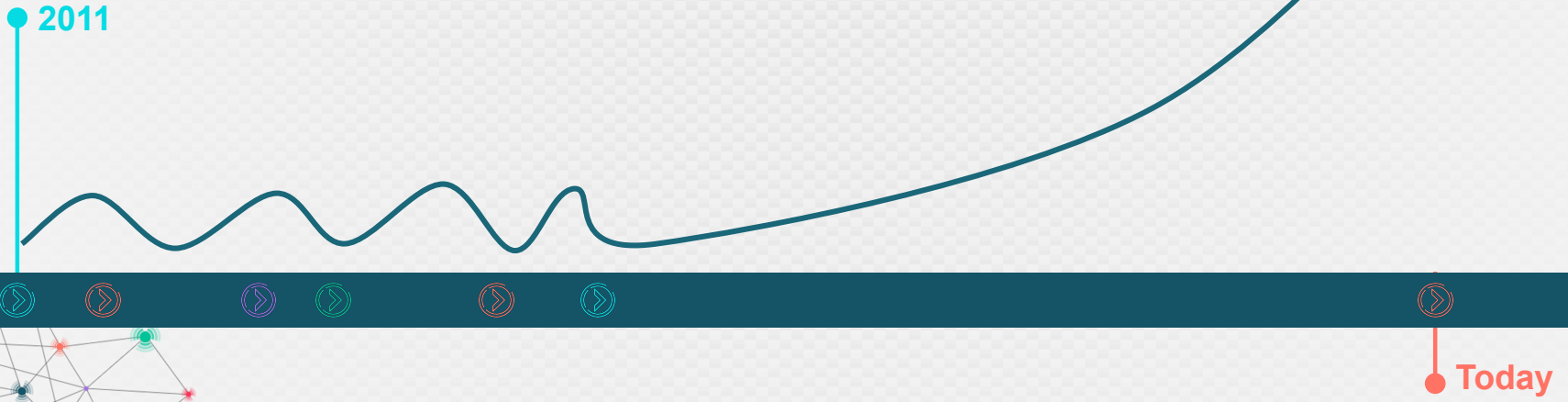
A network diagram consisting of numerous nodes connected by thin lines. The nodes are colored in various colors: red, green, cyan, purple, and black. Some nodes have concentric circles around them, suggesting a signal or activity. The network is spread across the top and bottom corners of the page.

Years of Inaction

IATI Standard Versions



IATI Governance & Technical Debt



A network diagram consisting of a complex web of thin grey lines connecting various nodes. The nodes are small circles in different colors: red, green, cyan, purple, and black. Some nodes have concentric circles around them, suggesting a signal or activity. The network is distributed across the top and bottom corners of the slide, with a large white space in the center.

Principles For Change

A network diagram consisting of a complex web of thin grey lines connecting various nodes. The nodes are represented by small colored circles in shades of red, orange, yellow, green, cyan, blue, and purple. Some nodes have a subtle ripple effect around them, suggesting activity or connectivity. The network is distributed across the top and bottom corners of the slide, with a large white space in the center containing the main text.

Integrate the **expectation of Change** so that the Standard can continue to evolve



Increase **Simplicity** to ensure ease of use

Improve **Conceptual Alignment** to ensure intuitive understanding.

Increase **Modularity** so that concepts can be separated

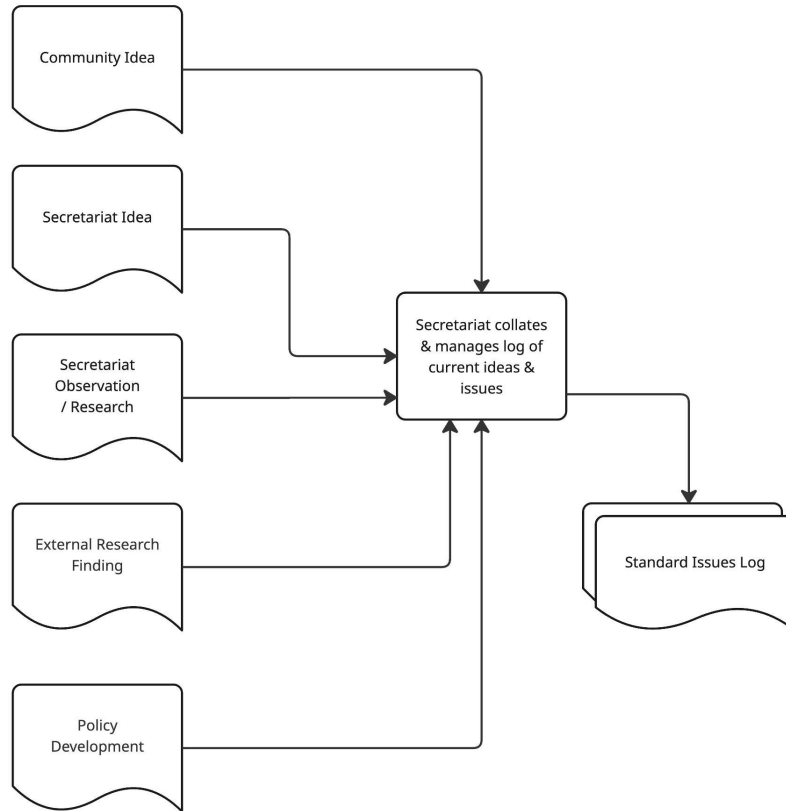
Increase the **Precision** of the Standard

Improve the **Integrity & coherence** of the Standard



A network diagram consisting of a complex web of thin grey lines connecting various nodes. The nodes are represented by small colored circles in shades of red, orange, yellow, green, cyan, blue, and purple. Some nodes have a subtle ripple effect around them, suggesting activity or connectivity. The network is distributed across the top and bottom corners of the slide, framing the central text.

Process For Change



Potential Changes: Activity Standard

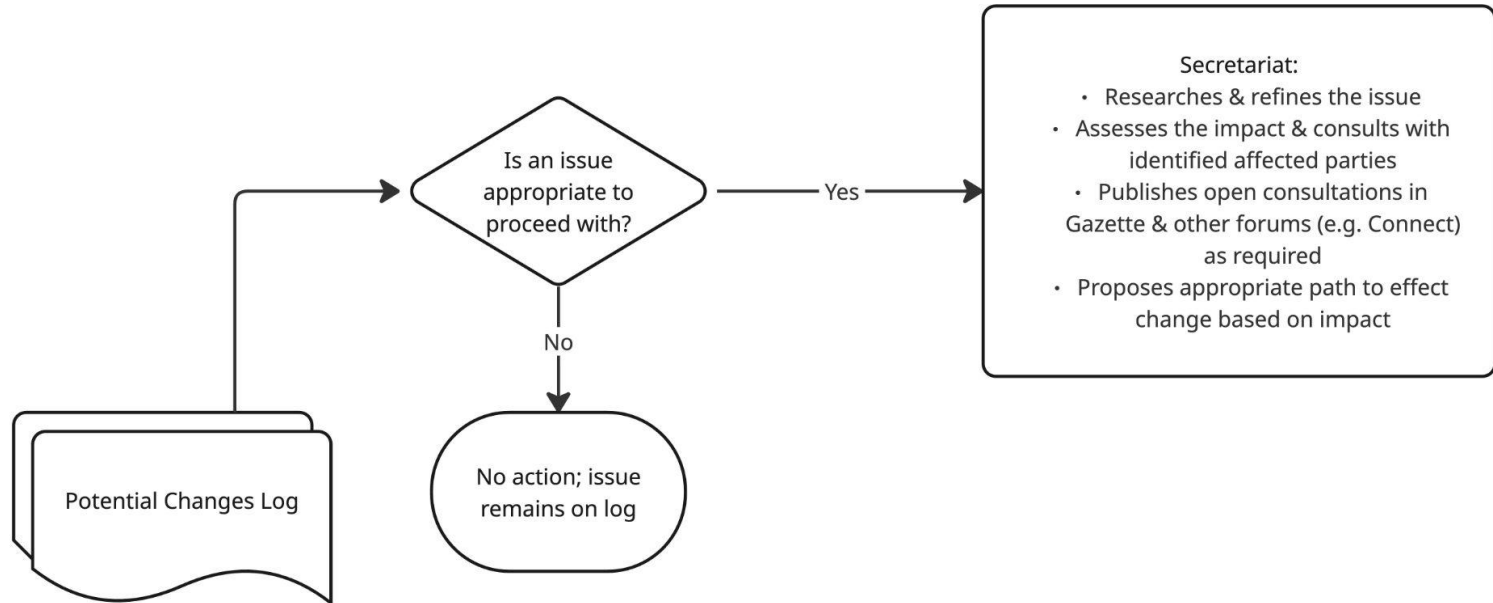
This table curates known potential changes for the IATI Activity Standard.

It is provided to give context and support to anyone interested in the future direction of the IATI Standard. It should not be interpreted as a backlog of items that will definitely be implemented.

For potential changes to be considered, a proposal is required. A proposal can consist of one or several potential changes, but requires clear rationale and impact assessment before any consideration.

At present, the IATI Secretariat will maintain this log for public access. Discussions, considerations, and ideas around potential changes for the IATI Standard are expected to take place in online and other fora, to ensure relevant stakeholders and use cases are clearly articulated and considered.

ELEMENT/ATTRIBUTE	PROPOSED CHANGE	RATIONALE	SOURCE	STATUS
Boolean attributes	Clarify references to and descriptions of booleans throughout the Standard. For example, change the terms 'process flag' and 'boolean flag' to 'flag'.	To increase consistency across the Standard.	Current secretariat work	Added Nov 2025 Proposal Nov 2025
Pseudocode (logic statements)	Reformat logic statements in the Standard.	To increase clarity across the Standard.	Current secretariat work	Added Nov 2025 Proposal Nov 2025
iati-activity/budget/@type	Add rules for revised budgets. The IATI Standard currently allows multiple versions of a revised budget to be published for the same time period.	Data users should be able to sum the budget figures to get totals for a country or region.	"Evidence for a Major Upgrade" Previous secretariat research	Added Nov 2025
iati-activity/budget/@type and @status	Change budget @status and @type to boolean.	Budget type and status are not mandatory, so it can be hard for a data user to know whether a budget is indicative/committed or original/revised. As 2 item codelists, a boolean could meet this need.	"Standardising the Standard" Previous secretariat research	Added Nov 2025
iati-activity/budget/budget-line	Add a budget-line element to the Activity Standard, as in the Organisation Standard .	To allow linkage between organisation and activity level budget lines.	Requested by IATI Community Member, Oct 2023	Added Nov 2025



Proposals

- Specific

```
39 39 <xsd:attribute name="version" type="xsd:string" use="required">
40 40 <xsd:annotation>
41 41 <xsd:documentation xml:lang="en">
42 - A number indicating the IATI specification version in use.
43 - This is mandatory and must be a valid version.
42 + The version number of the IATI Standard used in this file. This is required and MUST contain a valid IATI Standard version number (e.g., "2.03").
44 43 </xsd:documentation>
45 44 </xsd:annotation>
46 45 </xsd:attribute>
```

- Evidenced

Source Materials & Evidence

A number of inconsistencies were identified by IATI Secretariat staff during a review of the schema. These are detailed in [GitHub Issues](#).

- Impact-assessed

Impact

No data will change validation status as a result of this change. These changes have no impact on how data is validated by the IATI schema and rulesets.

No published (or to be published) data will be affected by these changes, as they are centred on fixing typographies in the schema.

A network diagram consisting of a complex web of thin grey lines connecting various nodes. The nodes are represented by small colored circles in shades of red, orange, yellow, green, cyan, blue, and purple. Some nodes have a subtle ripple effect around them, suggesting activity or connectivity. The network is distributed across the top and bottom corners of the slide, with a large white space in the center.

Versioning

Secretariat:

- Researches & refines the issue
- Assesses the impact & consults with identified affected parties
- Publishes open consultations in Gazette & other forums (e.g. Connect) as required
- Proposes appropriate path to effect change based on impact

Notice of proposal
is published in the
Gazette

45 day
clock starts

IATI Standard Gazette



**Dedicated
Mailing List**



**Public
Archive**



**45 Day
Clock**

IATI Standard Gazette

IATI Standard

IATI Standard Gazette

IATI Standard Gazette

IATI Standard Gazette / IATI Standard Gazette

IATI Standard Gazette

The IATI Standard Gazette is the official record of proposals and changes to the IATI Standard.

Each edition is distributed via a [mailing list](#) and is made available here as part of a perpetual archive.

Each proposal describes how to provide input for that specific proposal.

DOCUMENTATION

[Home](#)

GAZETTE EDITIONS & PROPOSALS

[2025](#)

TEMPLATES

[Proposal](#)

[Gazette](#)

POTENTIAL CHANGES

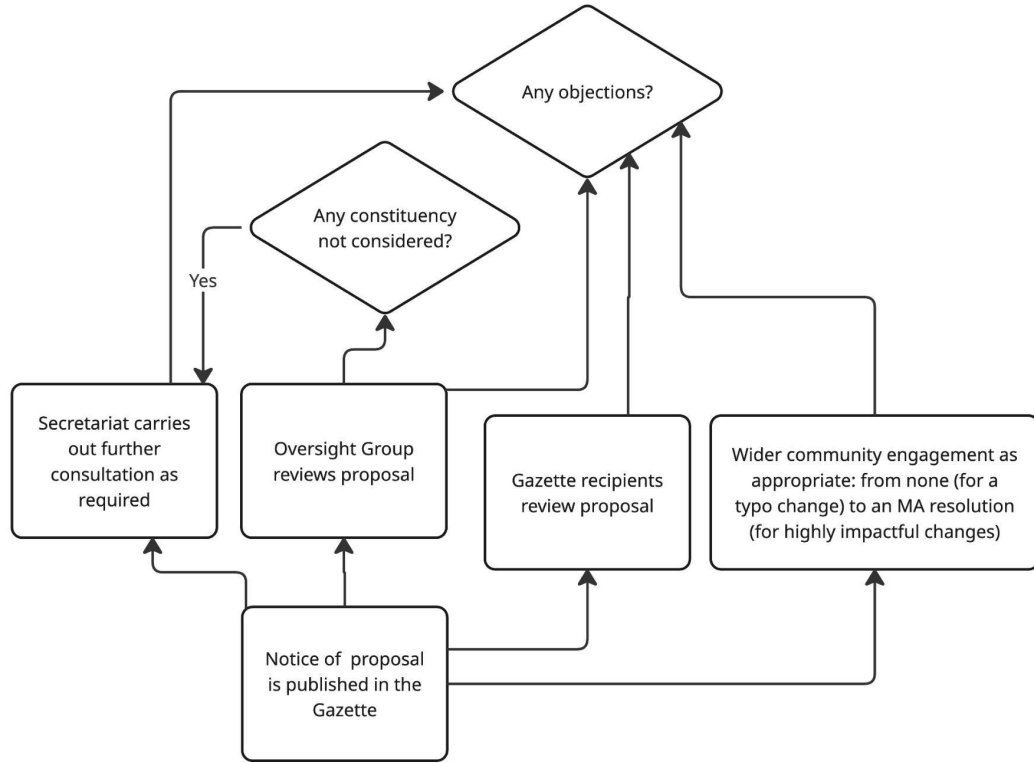
[Activity Standard](#)

[Organisation Standard](#)

[Codelists](#)

DOWNLOAD

[PDF](#)



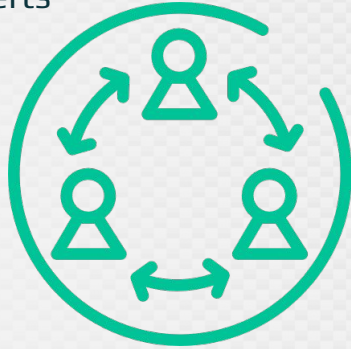
IATI Standard Oversight Committee



**Broad
Perspective**

IATI Standard Oversight Committee

Domain
Experts



Policy
Experts

Technical
Experts

**Broad
Skills**

A network diagram consisting of a complex web of thin grey lines connecting various nodes. The nodes are represented by small colored circles in shades of red, orange, yellow, green, cyan, blue, and purple. Some nodes have concentric circles around them, suggesting a signal or activity. The network is spread across the top and bottom corners of the slide.

Actually, Finally, Making Changes

A network diagram consisting of a complex web of thin grey lines connecting various nodes. The nodes are small circles in different colors: red, green, cyan, purple, and black. Some nodes have concentric circles around them, suggesting a signal or activity. The network is distributed across the top and bottom corners of the slide, with a large white space in the center.

....maybe

A network diagram consisting of a complex web of thin grey lines connecting various nodes. The nodes are represented by small colored circles in shades of red, green, cyan, purple, and black. Some nodes have concentric circles around them, suggesting signal strength or activity. The network is distributed across the top and bottom corners of the page, with a large white space in the center.

DANIDA Research



(ends)