



International
Aid Transparency
Initiative

Emerging Tools for IATI Data

Session 5

IATI Community Exchange, 27 November 2025

A network diagram with nodes and connections is visible in the top right and bottom left corners of the slide. The nodes are represented by small colored circles (red, green, blue, purple, black) with concentric circles around them, suggesting signal or activity. They are connected by thin grey lines.

Dr. Ammar Malik

The Gates Foundation

Modelling with IATI Data for Forecasting and Foresight

ODA budgets are being slashed

Across channels and sectors

Recipient governments respond

Recipient country populations feel impact

Funded but out of scope (aligned and informs)

we're funding PARTNERS

SEEK Development
ONE
OECD-DAC
IHME
AidData

ONE
Eurodad
OECD-DAC
CGD
ODI

Genesis analytics (SSA)
Tabadlab (Pakistan)
IHME

IHME
ISGlobal
Institute for Disease
Modelling

who FOCUS ON

Total development finance flows
ODA budget tracking

Bilateral channels
Multilateral institutions
Aid effectiveness

Recipients' own source revenue collection
Spending priorities
Debt crises
Reallocation of public funds

Health finance holes
Human deaths/DALYs across MNCNH & infectious diseases
Public opinion
Elite perceptions
Media sentiments

they find the DATA SOURCE

Donor submission
Draft donor budgets

Data analytics
Unofficial data collection

Early discussions in public decision-making circles
Budget drafts in parliaments

Budgets
National statistics
Modelling
Surveys
Media tracking

and track key INDICATORS

ODA
OOF
Flow type
Total \$
Recipients
Sectors

3- and 5-digit OECD CRS codes on sectors and delivery channels

Revenues, expenditures, budgets across priorities at national and sub-national levels

Public spending (\$) by areas
Human deaths & DALYs
Disease patterns

but there are known GAPS

Non-DAC flows (OOF, philanthropic flows, remittances, FDI)
Non-ODA flows

Incomplete 5-digit coding
Gender markers
Non-ODA flow details

Total health expenditures - private, out of pocket, insurance
Lags in public spending reports

National statistical and budget offices have inadequate data systems

ODA cuts net of LMIC budget response

Modeling human impacts from net financial flows





Olivier Mills

Boabab

FCDO Dev Explorer



**MINISTRY OF FOREIGN AFFAIRS
OF DENMARK**

FTS

Managing humanitarian data

Ole Jacob Hjøllund – 27. November Nairobi

Changes - nine months to identify new paths

Key events

- DG-ECHO announced EDRIS would be phased out, 10. July 2024
- OCHA FTS-team organized WS with IATI in Istanbul, 9.-11. October 2024
 - Resulting joint work-plan included: Baseline-analysis, using Denmark as case, comparing humanitarian data published in different formats/routines
- FTS – presentation of transition plan for EU-MS (from EDRIS to FTS) 11. February 2025
- Revised FTS-Template shared 12. February
- Guidance on FTS's 'unique identifiers' shared 24. February
- EDRIS cut off 15. March

Analysis of Denmark's data

Key observations

- Denmark (MoFA) has been reporting on behalf of partners, in EDRIS
- The reported financial data largely reflects budgets rather than flows
- Most of Denmark's humanitarian assistance is provided in flexible modalities
- Danish partners are publishing flow-data in IATI

Conclusions and recommendations

- Denmark (MoFA) should instruct partners to report to FTS
- IATI-Data from Danish partners is of better quality, to FTS-purposes, than EDRIS
- IATI should provide 'conversion-tool' for publishers to convert their IATI-data into the simpler FTS-format
- FTS should establish a 'bridge', allowing pull of IATI-data

OCHA's requirements for FTS-reporting

Requirements

- Reporting to FTS must be an active decision, with a recognizable 'reporter' – FTS will not draw data from multipurpose publications like IATI
- Report as frequently as possible, but at least
 - Min. frequency for donors: Monthly
 - Probably OK just to ask for quarterly updates from partners
- Use the FTS excel template (web-interface at some point in the future)

What could be the mutual benefits?

- Current IATI-publishers could become FTS-reporters with a minimal added effort
- We can use FTS-curation as a QA-mechanism for IATI-data - adding the FTS flow_id as verification
- We can offer IATI-data as a pool of granular data and added information about the flows reflected in the very lean FTS data-set.
- We can add the FTS interlinked flows to our own IATI-method for traceability, capturing partners that are not publishing in IATI
- We could offer standard/tools for reconciliation of data published independently in the two formats

General lessons to be learned reg. interoperability

IATI-FTS Experience

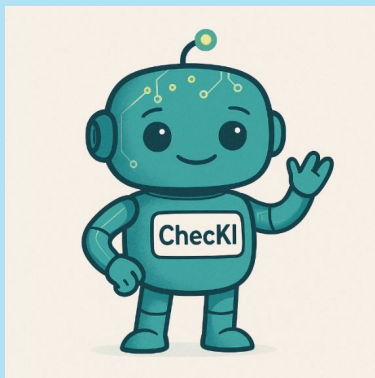
- Data-analysis (case-study Denmark)
- Analysis of the management of data-sources
- Identifying business entity to match data-requirement
- Building prototype (POC)
- Designing solution

General principle

- Reconciliation of data currently published independently
- Explaining differences (due to e.g. timing or structure)
- Understanding rules of aggregation
- Charting data-availability
- Testing business case

CheckI+

Your AI Assistant for IATI Projects



Quick reminder: The original CheckKI

In July we showed the CheckKI, our internal AI-tool to improve project descriptions.

Premise:

- Project Descriptions are the business card of any project.
- Descriptions must be understandable for people with and without development cooperation experience.

Idea:

An AI-supported application that evaluates project descriptions and provides quick and concrete feedback for improvement.

Data Quality makes a difference



Data quality seems like a no-brainer, but

- It's often harder than we thought
- It needs a data quality culture and willingness (from input to usage)
- It requires training and awareness raising
- It's a collaborative effort
- And yes, it also helps with AI applications

AND

AI can also help improving data quality

And now to the +

What if we utilised the same underlying technology to generate information for the IATI dataset?

- Key words (BMZ tool)
- OECD policy markers
 - Sector codes

Once developed, this technology could also be applied to additional IATI/OECD codes.

Which technology do we use?



Description

Analysis with AI:

AI-supported analysis of BMZ project descriptions and IATI/OECD markers using open weight models.

Tool

 **Phi-4**



User-friendly application & backend:

User-friendly output of the description evaluation. The tool also allows for a batch processing of many descriptions at the same time.


Streamlit

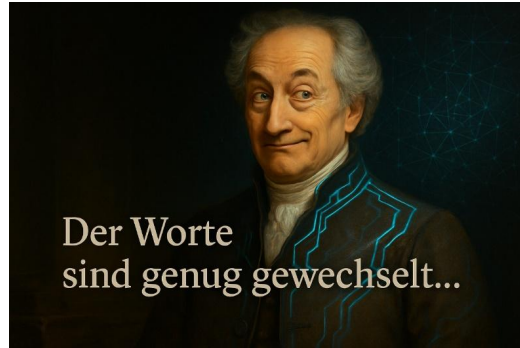


IT integration:

The application serves as a blueprint for other AI tools. Integration into new government platform.

 **PLAIN**
PLATFORM ANALYSIS AND
INFORMATION SYSTEM

Live Presentation



*The words you've bandied are sufficient;
'Tis deeds that I prefer to see.*

Goethe, Faust I

CheckKI+ x Project Description Checks x Keywords x Policy marker x Neue Aufzeichnung - x +

localhost:8501 A ☆ ↻ ↓ Aktualisieren ...

<< Deploy ⋮

CheckKI+ - Home page

Project Descriptions

Keywords

Sector Codes

Policy Marker

CheckKI+

An AI-powered application by BMZ directorates 111 and 112

This app allows to quality-check project descriptions, and to assign policy markers and keywords to projects based on their descriptions. You can reach the different functionalities via the navigation menu on the left.

Disclaimer

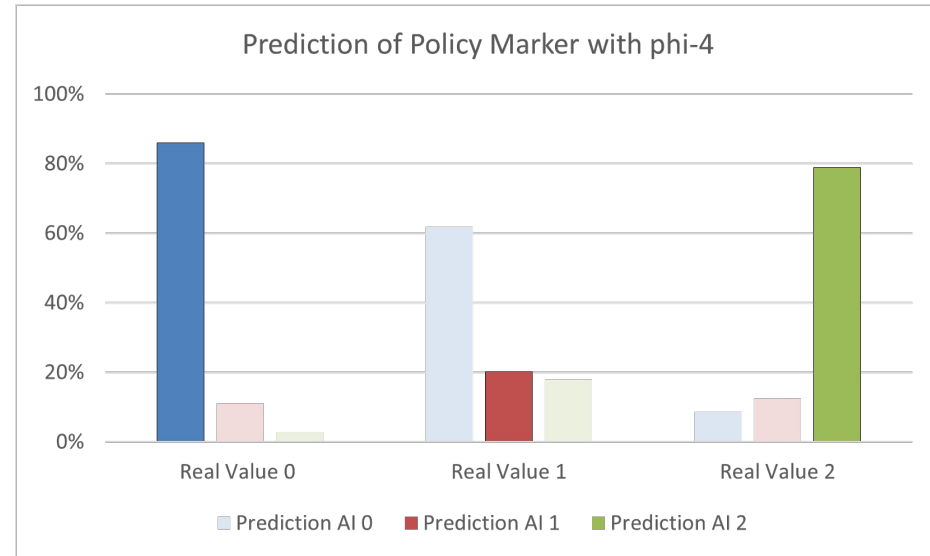
Please ensure that you do not use classified information, personal data of individuals outside the administration, special categories of personal data, or employee data. Please also note that this AI can make mistakes. Therefore, results should always be critically reviewed.

Assessment of AI Tool Performance for OECD Policy Markers

For the OECD policy markers, we evaluated how well the AI tool performs compared to human-assigned codes:

We randomly selected 1000 projects (descriptions > 500 characters) and predicted values for all 10 policy markers:

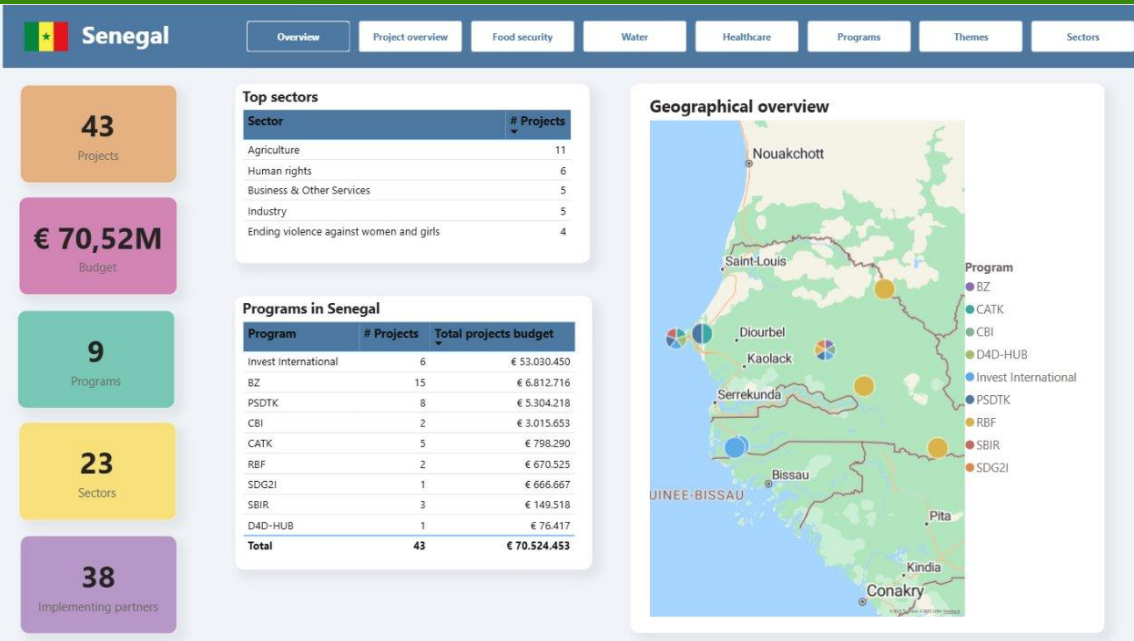
- For classifying if a marker is not relevant (code 0) or a principal objective (code 2), we achieved an accuracy score of 80%, respectively
- For significant objectives (code 1), the accuracy is lower



Learnings and take aways

- AI can indeed assist in assigning markers and providing additional information for IATI.
- Good project descriptions are essential for high-quality AI output.
- **Important:** Machines should not make decisions alone; a human should always remain in the loop.
- AI tools don't need to be overly complex. Often, a few lines of code and an open (weight) model are sufficient for relatively simple tasks.
- Reusing code for further development can be highly beneficial.

We would be happy to share the code and look forward to receiving your feedback.



Unlocking the Use of IATI Data as a Publisher

Floor Oostwegel –
Data Coordinator –
International Cooperation Department

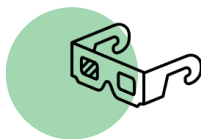
- Netherlands Enterprise Agency (RVO)



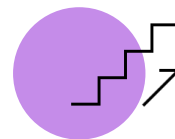
Shifting focus from publishing to using IATI data



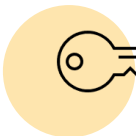
**Start:
Data Driven
Conversations**



**Contextualizing
IATI data**



**Driving Data
Quality**



**Unlocking
broad IATI
dataset**



**Current
challenges**



How can RVO leverage data to support themselves and Embassies to work towards programmes that better align with existing initiatives?

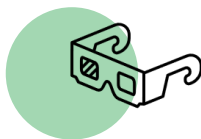
Senegal							
last update 28 March 2025							
PROGRAMME	PROJECT NUMBER/ IATI LINK	STARTING DATE	END DATE	SECTOR	PROJECT STATUS	IMPLEMENTING TEAM	TITLE
Combi Aanpak	CIC23SNS01	01-09-2023	31-12-2026	Food crop production	Implementation phase	Delphy B.V.	Onion farming for the Fut
Combi Aanpak	CKB23SN01A	01-12-2023	01-03-2024	Business development services	finalised	Netherlands embassy in Dakar, Senega	Doing Business in Senegal
Combi Aanpak	CST23SN02	01-10-2023	31-05-2024	Agricultural research	finalised	Rijksdienst voor Ondernemend Nederl.	Mapping Agroecology Ser
Combi Aanpak	CST23SN01	01-06-2023	30-09-2023	Agricultural research	finalised	Haske Conseils	Mapping Youth agriprene
Combi Aanpak	CTF24MC01	15-03-2024	01-07-2024	Agricultural development	Implementation phase	Vereniging NABC (Netherlands African	Africa Policy, Trade & Dev
Combi Aanpak	CTM24SN01	11-01-2024	30-06-2024	Horticulture	finalised	Rijksdienst voor Ondernemend Nederl.	Trade Mission HortiCôte S
Combi Aanpak	CTM25SN01	07-01-2025	10-05-2025	Horticulture	Implementation phase	Raamcontract	Trade Mission St Louis Sen
Combi Aanpak	CST24SN01	19-08-2024	15-12-2024	Horticulture	finalised	Deloitte Senegal	Planning Set-Up and Man
Combi Aanpak	CST24SN02	19-08-2024	19-12-2024	Horticulture	finalised	Delphy B.V.	Operational Planning Coo
ENDEVABC	SEES001	10-01-2022	10-07-2023	Small and medium-sized enterprises (SME) d	finalised	Charm Impact Ltd.	Accelerating Access to Fin
ENDEVABC	SEES002	01-12-2022	01-06-2024	Small and medium-sized enterprises (SME) d	finalised	LENDAHAND ETHEX LTD	SME Finance Facilitator
ENDEVABC	SEES003	01-01-2023	01-07-2024	Small and medium-sized enterprises (SME) d	finalised	bettervest GmbH	Accelerating Access to Fin
PSD Toolkit	OCIF21SN03	01-09-2021	31-12-2025	Small and medium-sized enterprises (SME) d	Implementation phase	INCO	Orange Corners Innovatio
PSD Toolkit	PCB23SN01A	01-04-2023	15-02-2024	Transport regulation, Road transport	finalised	Netherlands embassy in Dakar, Senega	Communication plan for b
PSD Toolkit	PIC23SN01	01-01-2023	30-06-2026	Business development services - Agricultural	Implementation phase	Rijk Zwaan Production B.V.	Impactcluster Horti Seneg



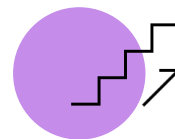
Shifting focus from publishing to using IATI data



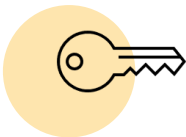
**Start:
Data Driven
Conversations**



**Contextualizing
IATI data**



**Driving Data
Quality**



**Unlocking
broad IATI
dataset**



**Current
challenges**



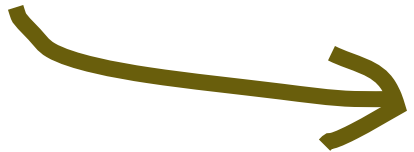
We translated IATI data to relevant policy themes for NL government

```
case
when policy_marker_code = 12
OR Sector_code LIKE '311%'
OR SDG_Goal_code = '2'
Then 1
ELSE 0
END AS Theme_Food_security,
```

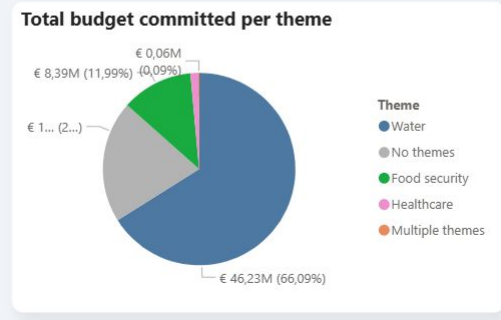
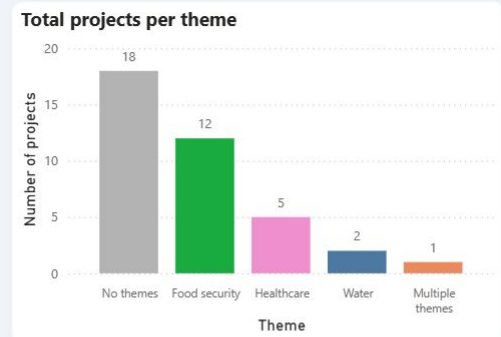
```
case
when Sector_code LIKE '140%'
OR SDG_Goal_code = '6'
Then 1
ELSE 0
END AS Theme_water,
```

```
case
when policy_marker_code = 9
OR policy_marker_code = 11
OR Sector_code LIKE '121%'
```

PROGRAMME	PROJECT NUMBER/ IATI LINK	STARTING DATE	END DATE	SECTOR	PROJECT STATUS	IMPLEMENTING TEAM	TITLE
Combi Aanpak	CIC23SN01	01-09-2023	31-12-2026	Food crop production	Implementation phase	Delphy B.V.	Onion farming for the Fut
Combi Aanpak	CKB23SN01A	01-12-2023	01-03-2024	Business development services	finalised	Netherlands embassy in Dakar, Senega	Doing Business in Senegal
Combi Aanpak	CST23SN02	01-10-2023	31-05-2024	Agricultural research	finalised	Rijksdienst voor Ondernemend Nederl	Mapping Agroecology Ser
Combi Aanpak	CST23SN01	01-06-2023	30-09-2023	Agricultural research	finalised	Haske Conseils	Mapping Youth agriprene
Combi Aanpak	CIF24MC01	15-03-2024	01-07-2024	Agricultural development	Implementation phase	Vereniging NABC (Netherlands African	Africa Policy, Trade & Dev
Combi Aanpak	CFM24SN01	11-01-2024	30-06-2024	Horticulture	finalised	Rijksdienst voor Ondernemend Nederl	Trade Mission HortiCôteS
Combi Aanpak	CTM25SN01	07-01-2025	10-05-2025	Horticulture	Implementation phase	Raamcontract	Trade Mission St Louis Se
Combi Aanpak	CST24SN01	19-08-2024	15-12-2024	Horticulture	finalised	Deloitte Senegal	Planning Set-Up and Man
Combi Aanpak	CST24SN02	19-08-2024	19-12-2024	Horticulture	finalised	Delphy B.V.	Operational Planning Coo
ENDEVABC	SEFS001	10-01-2022	10-07-2023	Small and medium-sized enterprises (SME) d	finalised	Charm Impact Ltd.	Accelerating Access to Fin
ENDEVABC	SEFS002	01-12-2022	01-06-2024	Small and medium-sized enterprises (SME) d	finalised	LENDAHAND ETHEX LTD	SME Finance Facilitator
ENDEVABC	SEFS003	01-01-2023	01-07-2024	Small and medium-sized enterprises (SME) d	finalised	bettervest GmbH	Accelerating Access to Fin
PSD Toolkit	QCIF21SN03	01-09-2021	31-12-2025	Small and medium-sized enterprises (SME) d	Implementation phase	INCO	Orange Corners Innovati
PSD Toolkit	PCB23SN01A	01-04-2023	15-02-2024	Transport regulation, Road transport	finalised	Netherlands embassy in Dakar, Senega	Communication plan for b
PSD Toolkit	PCB23SN03	01-01-2023	30-06-2026	Business development services, Agricultural	Implementation phase	Rijk Zwaan Production B.V.	Impactcluster Horti Sena



Starting from the information needs generated enthusiasm for the potential of **using** the IATI data that we have been **publishing**.

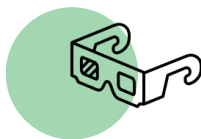




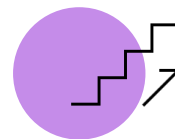
Shifting focus from publishing to using IATI data



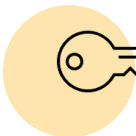
**Start:
Data Driven
Conversations**



**Contextualizing
IATI data**



**Driving Data
Quality**



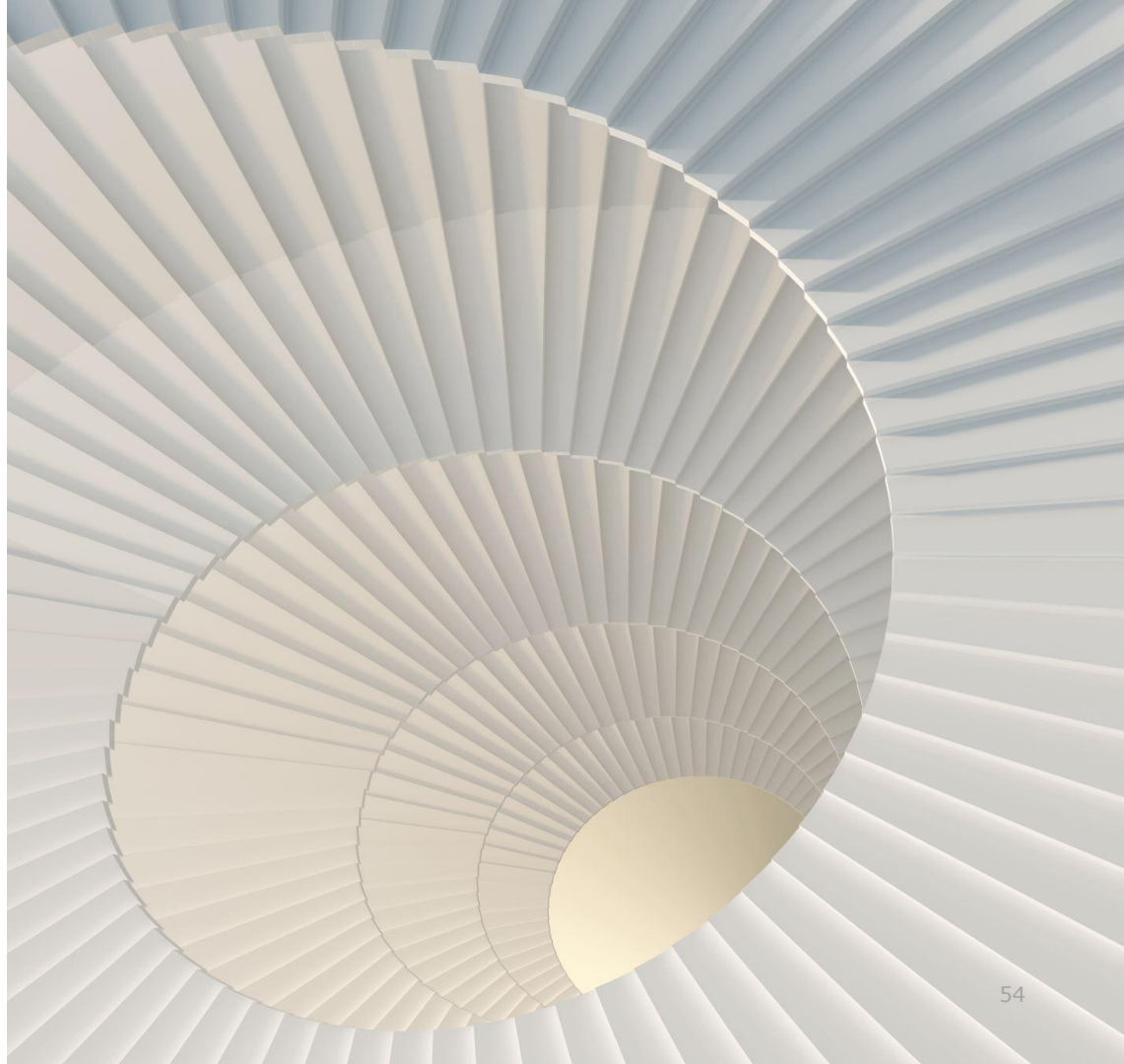
**Unlocking
broad IATI
dataset**



**Current
challenges**

By engaging with the data themselves, colleagues spotted inconsistencies...

... Which lead to significant improvements in our own data quality.

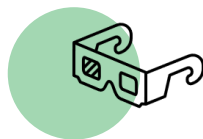




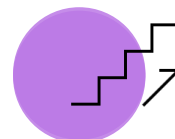
Shifting focus from publishing to using IATI data



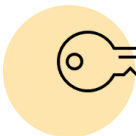
**Start:
Data Driven
Conversations**



**Contextualizing
IATI data**



**Driving Data
Quality**



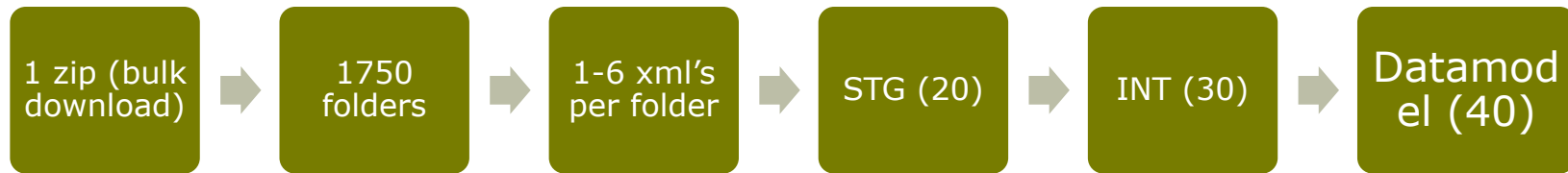
**Unlocking
broad IATI
dataset**



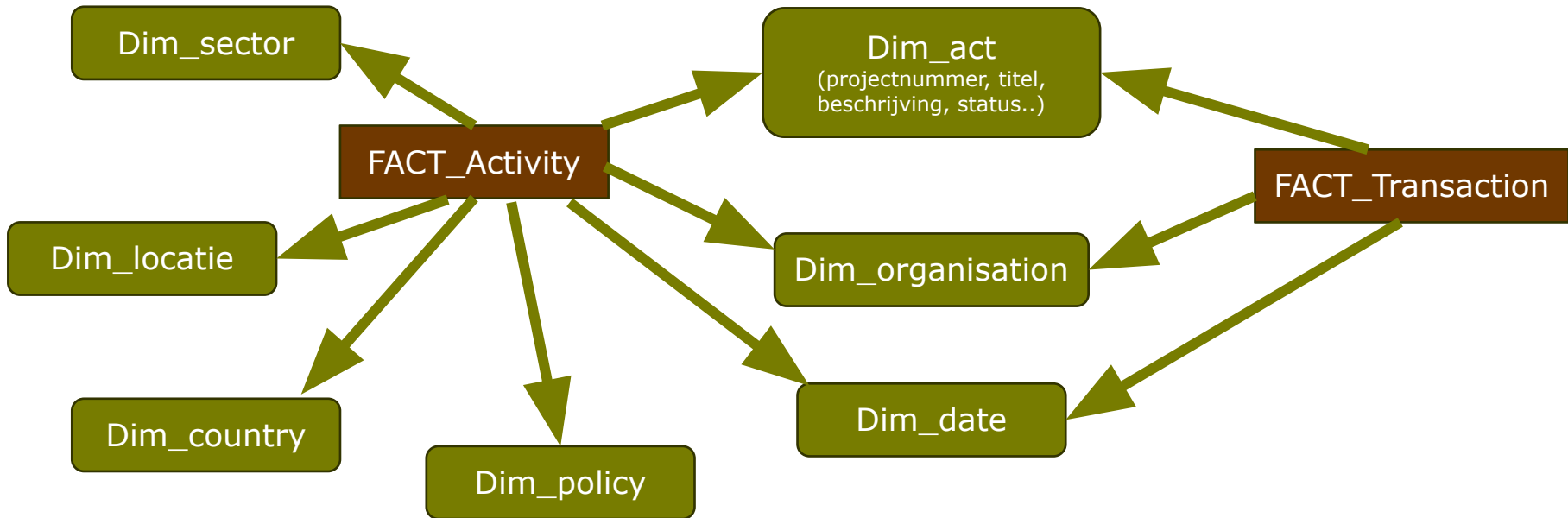
**Current
challenges**



We started adding IATI data from other partners manually via Excel files..

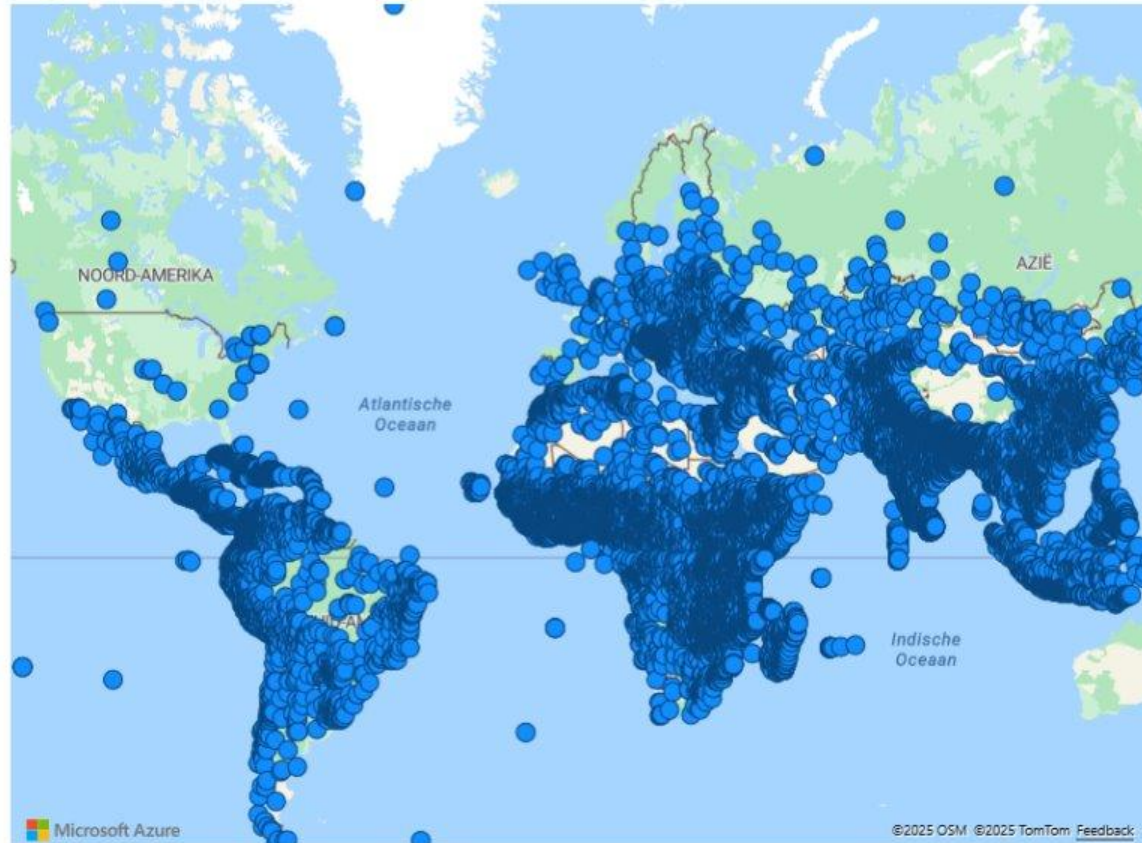


... but are now unlocking the full IATI dataset in our own datawarehouse.



TEST - Koppeling Databricks en PowerBI

longitude en latitude

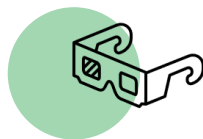




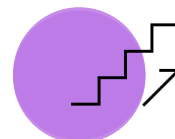
Shifting focus from publishing to using IATI data



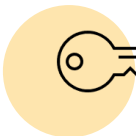
**Start:
Data Driven
Conversations**



**Contextualizing
IATI data**



**Driving Data
Quality**



**Unlocking
broad IATI
dataset**



**Current
challenges**

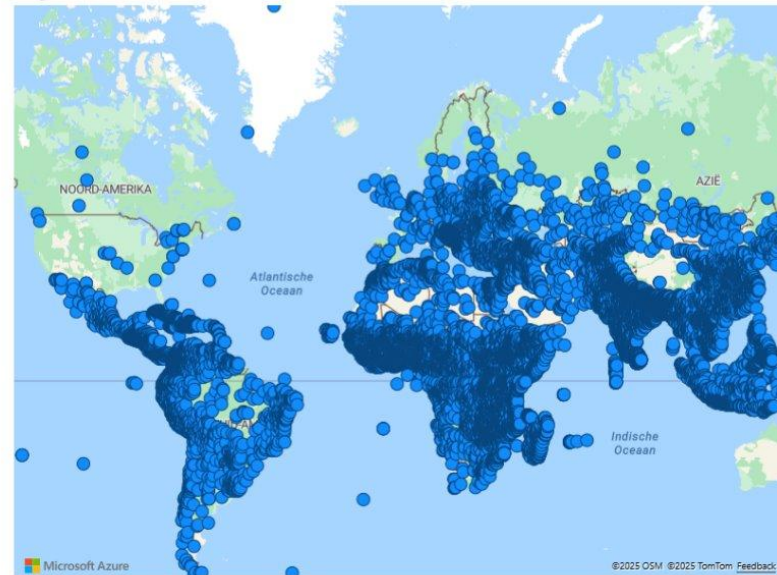


🧩 Making collaborative decisions in what to show

Geographical overview



longitude en latitude





❏ Making collaborative decisions in what to show

❏ Data quality (esp. for organization data) needs improvement to support a robust data model.

Netherlands Enterprise Agency

Netherlands Enterprise Agency (NEA), Netherlands

Netherlands Enterprise Agency (RVO)

RVO (Netherlands Enterprise Agency)

RVO Rijksdienst voor Ondernemend Nederland (Netherlands Enterprise Agency)

RVO – Agentschap NL



- ❏ Making collaborative decisions in what to show
- ❏ Data quality (esp. for organization data) needs improvement to support a robust data model.
- ❏ Adding missing data / changing data in our own data warehouse



❏ Making collaborative decisions in what to show

❏ Data quality (esp. for organization data) needs improvement to support a robust data model.

❏ Adding missing data / changing data in our own data warehouse

The real challenge will be whether we truly dare to make more data-driven decisions in the future.



Further discussion / tips / questions?



Floor.Oostwegel@rvo.nl